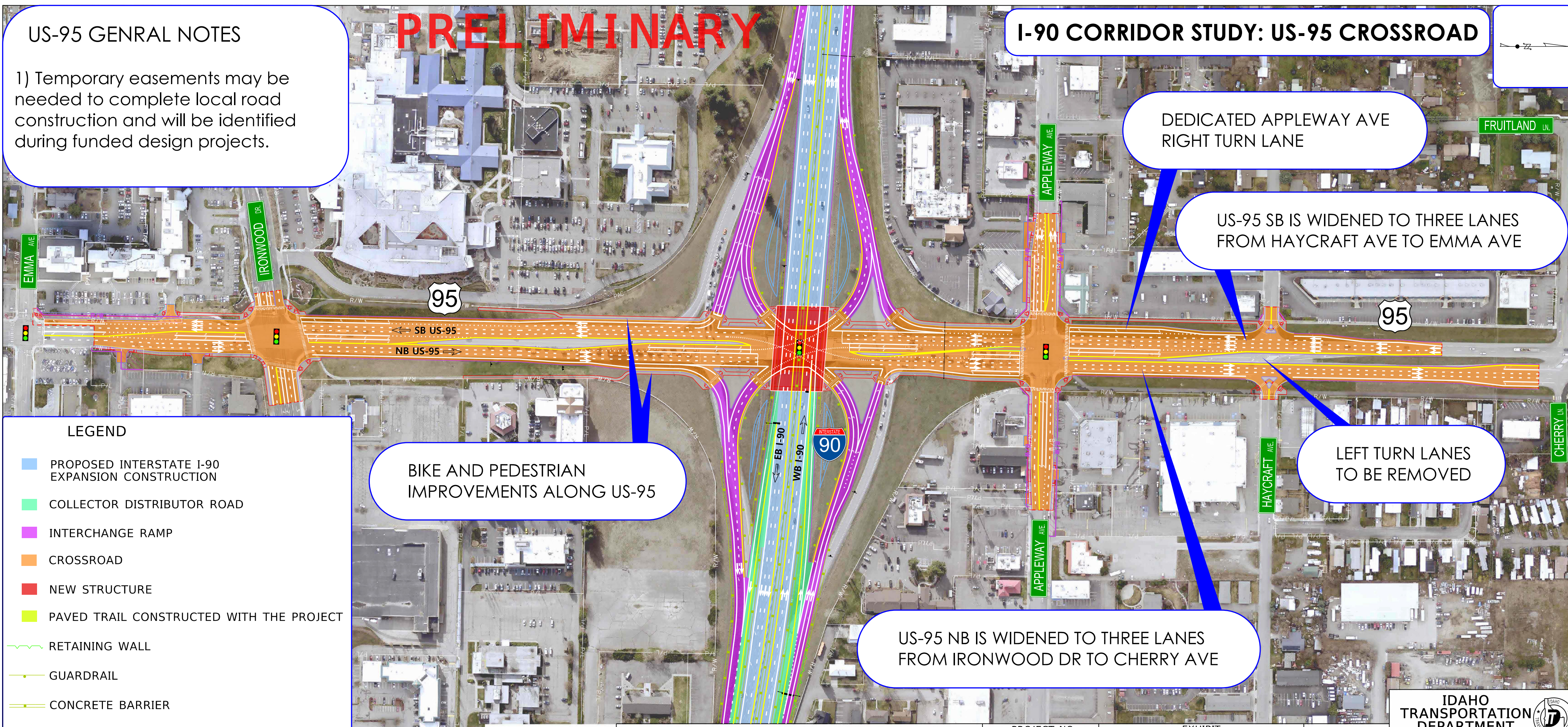
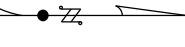


# US-95 GENRAL NOTES

1) Temporary easements may be needed to complete local road construction and will be identified during funded design projects.

# PRELIMINARY

# I-90 CORRIDOR STUDY: US-95 CROSSROAD



## LEGEND

- PROPOSED INTERSTATE I-90 EXPANSION CONSTRUCTION
- COLLECTOR DISTRIBUTOR ROAD
- INTERCHANGE RAMP
- CROSSROAD
- NEW STRUCTURE
- PAVED TRAIL CONSTRUCTED WITH THE PROJECT
- RETAINING WALL
- GUARDRAIL
- CONCRETE BARRIER
- SIDEWALK
- PROPOSED RIGHT-OF-WAY ACQUISITION (SUBJECT TO CHANGE AS DESIGN PROGRESSES)  
TEMPORARY CONSTRUCTION EASEMENTS MAY BE NEEDED TO COMPLETE LOCAL ROAD IMPROVEMENTS AND WILL BE IDENTIFIED DURING FUNDED DESIGN PROJECTS.

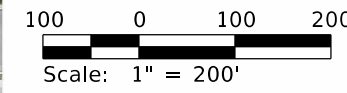
BIKE AND PEDESTRIAN IMPROVEMENTS ALONG US-95

DEDICATED APPLEWAY AVE RIGHT TURN LANE

US-95 SB IS WIDENED TO THREE LANES FROM HAYCRAFT AVE TO EMMA AVE

US-95 NB IS WIDENED TO THREE LANES FROM IRONWOOD DR TO CHERRY AVE

LEFT TURN LANES TO BE REMOVED



## SH-41 TO 15<sup>th</sup> STREET

PROJECT NO.	EXHIBIT	CADD FILE NAME
A022(293)	I-90, SH-41 TO 15TH ST IC KOOTENAI COUNTY US-95	22293 planD008.DGN
		COUNTY KOOTENAI
		KEY NUMBER 22293

IDAHO TRANSPORTATION DEPARTMENT  
YOUR Safety—YOUR Mobility—YOUR Economic Opportunity

**DAVID EVANS AND ASSOCIATES INC.**

HORROCKS ENGINEERS      Parametrix