

I-90: SH-41 TO 15TH ST GENERAL NOTES

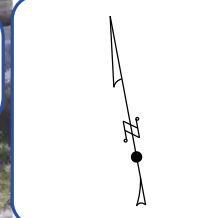
- 1) The alignment of I-90 is still in development but will remain in existing right of way.
- 2) Temporary easements may be needed to complete local road construction and will be identified during funded design projects.

PRELIMINARY

PRELIMINARY

PRELIMINARY

I-90 CORRIDOR STUDY: SH-41 TO 15TH ST

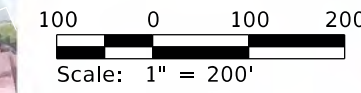
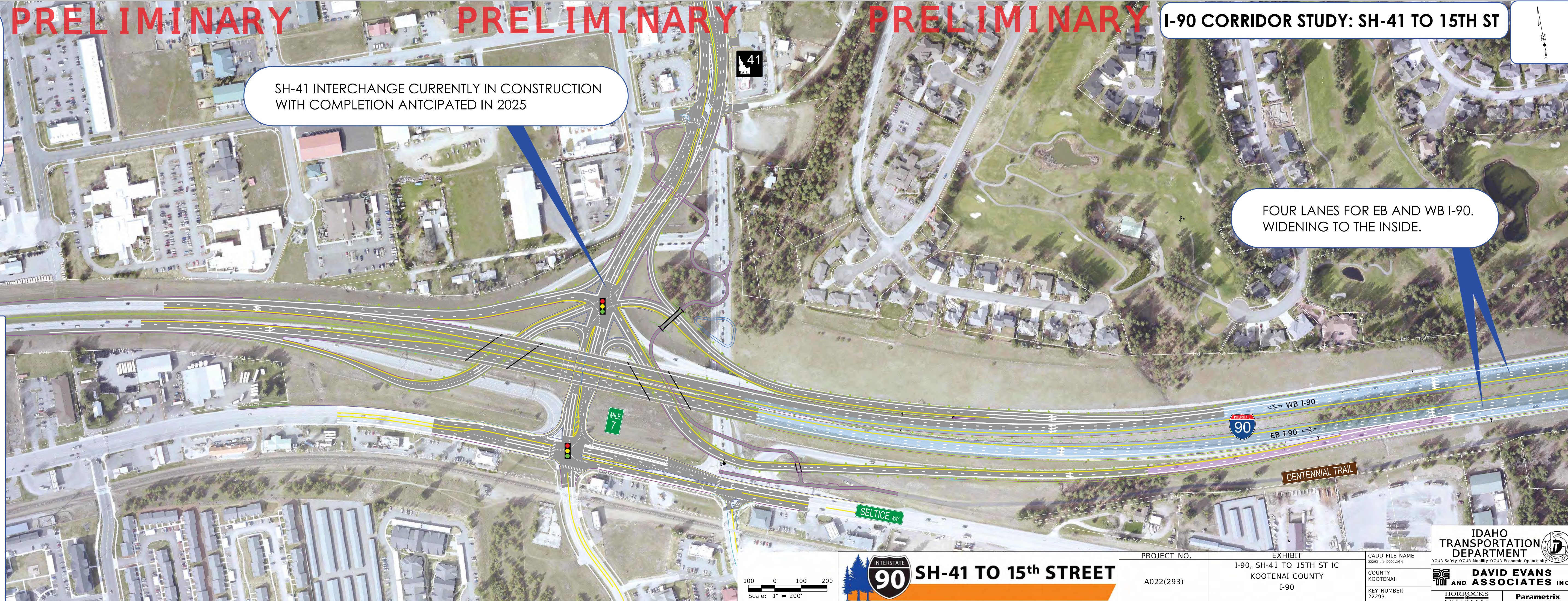


SH-41 INTERCHANGE CURRENTLY IN CONSTRUCTION WITH COMPLETION ANTICIPATED IN 2025

FOUR LANES FOR EB AND WB I-90. WIDENING TO THE INSIDE.

LEGEND

- PROPOSED INTERSTATE I-90 EXPANSION CONSTRUCTION
- COLLECTOR DISTRIBUTOR ROAD
- INTERCHANGE RAMP
- CROSSROAD
- NEW STRUCTURE
- PAVED TRAIL CONSTRUCTED WITH THE PROJECT
- RETAINING WALL
- GUARDRAIL
- CONCRETE BARRIER
- SIDEWALK
- ▨ PROPOSED RIGHT-OF-WAY ACQUISITION (SUBJECT TO CHANGE AS DESIGN PROGRESSES)
TEMPORARY CONSTRUCTION EASEMENTS MAY BE NEEDED TO COMPLETE LOCAL ROAD IMPROVEMENTS AND WILL BE IDENTIFIED DURING FUNDED DESIGN PROJECTS.



SH-41 TO 15th STREET

PROJECT NO. A022(293)	EXHIBIT I-90, SH-41 TO 15TH ST IC KOOTENAI COUNTY I-90	CADD FILE NAME 22293 plan001.dwg
		COUNTY KOOTENAI
		KEY NUMBER 22293

IDAHO TRANSPORTATION DEPARTMENT
YOUR Safety—YOUR Mobility—YOUR Economic Opportunity

DAVID EVANS AND ASSOCIATES INC.
Parametrix

PRELIMINARY

PRELIMINARY

I-90 CORRIDOR STUDY: SH-41 TO 15TH ST

I-90: SH-41 TO 15TH ST GENERAL NOTES

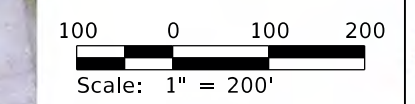
- 1) The alignment of I-90 is still in development but will remain in existing right of way.
- 2) Temporary easements may be needed to complete local road construction and will be identified during funded design projects.



FOUR LANES FOR EB AND WB I-90. WIDENING TO THE INSIDE.

LEGEND

- PROPOSED INTERSTATE I-90 EXPANSION CONSTRUCTION
- COLLECTOR DISTRIBUTOR ROAD
- INTERCHANGE RAMP
- CROSSROAD
- NEW STRUCTURE
- PAVED TRAIL CONSTRUCTED WITH THE PROJECT
- RETAINING WALL
- GUARDRAIL
- CONCRETE BARRIER
- SIDEWALK
- PROPOSED RIGHT-OF-WAY ACQUISITION (SUBJECT TO CHANGE AS DESIGN PROGRESSES)
TEMPORARY CONSTRUCTION EASEMENTS MAY BE NEEDED TO COMPLETE LOCAL ROAD IMPROVEMENTS AND WILL BE IDENTIFIED DURING FUNDED DESIGN PROJECTS.




SH-41 TO 15th STREET

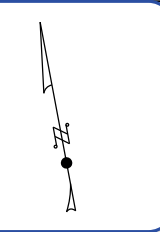
PROJECT NO. A022(293)	EXHIBIT I-90, SH-41 TO 15TH ST IC KOOTENAI COUNTY I-90	CADD FILE NAME 22293 plan002.dwg	IDAHO TRANSPORTATION DEPARTMENT <small>YOUR Safety—YOUR Mobility—YOUR Economic Opportunity</small>  DAVID EVANS AND ASSOCIATES INC. <small>HORROCKS ENGINEERS Parametrix</small>
		COUNTY KOOTENAI	
		KEY NUMBER 22293	

PRELIMINARY

PRELIMINARY

PRELIMINARY

I-90 CORRIDOR STUDY: SH-41 TO 15TH ST



I-90 BRIDGES RAISED TO INCREASE CLEARANCE OVER HUETTER RD AND ALLOW FOR FUTURE HUETTER RD WIDENING

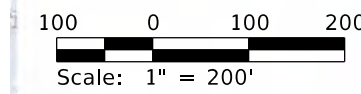
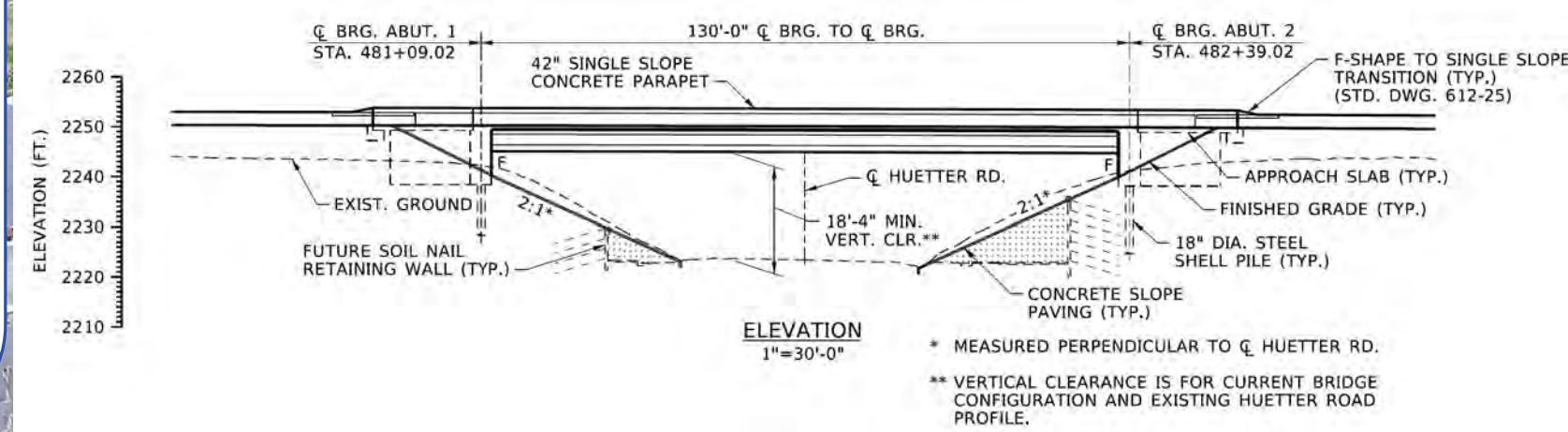
FOUR LANES FOR EB AND WB I-90. LANES MEET IN THE MIDDLE CONTINUE PAST 4TH STREET INTERCHANGE

I-90: SH-41 TO 15TH ST GENERAL NOTES

- 1) The alignment of I-90 is still in development but will remain in existing right of way.
- 2) Temporary easements may be needed to complete local road construction and will be identified during funded design projects.

LEGEND

- PROPOSED INTERSTATE I-90 EXPANSION CONSTRUCTION
 - COLLECTOR DISTRIBUTOR ROAD
 - INTERCHANGE RAMP
 - CROSSROAD
 - NEW STRUCTURE
 - PAVED TRAIL CONSTRUCTED WITH THE PROJECT
 - RETAINING WALL
 - GUARDRAIL
 - CONCRETE BARRIER
 - SIDEWALK
 - PROPOSED RIGHT-OF-WAY ACQUISITION (SUBJECT TO CHANGE AS DESIGN PROGRESSES)
- TEMPORARY CONSTRUCTION EASEMENTS MAY BE NEEDED TO COMPLETE LOCAL ROAD IMPROVEMENTS AND WILL BE IDENTIFIED DURING FUNDED DESIGN PROJECTS.



PROJECT NO. A022(293)	EXHIBIT I-90, SH-41 TO 15TH ST IC KOOTENAI COUNTY I-90	CADD FILE NAME 22293 plan0003.dwg
		COUNTY KOOTENAI
		KEY NUMBER 22293

IDAHO TRANSPORTATION DEPARTMENT
YOUR Safety-YOUR Mobility-YOUR Economic Opportunity

DAVID EVANS AND ASSOCIATES INC.

HORROCKS ENGINEERS Parametrix

I-90: SH-41 TO 15TH ST GENERAL NOTES

- 1) The alignment of I-90 is still in development but will remain in existing right of way.
- 2) Temporary easements may be needed to complete local road construction and will be identified during funded design projects.

FOUR LANES FOR EB AND WB I-90. LANES MEET IN THE MIDDLE CONTINUE PAST 4TH STREET INTERCHANGE

THE ULTIMATE LANE CONFIGURATION FOR RAMSEY RD NORTH OF APPLEWAY AVE IS STILL UNDER DESIGN CONSIDERATION.

BIKE AND PEDESTRIAN IMPROVEMENTS ALONG NORTHWEST BOULEVARD

WIDENED NORTHWEST BOULEVARD TO 3 LANES IN BOTH DIRECTIONS

REALIGN LEE CT AND RECONFIGURE PARKING LOT

5 LANES I-90 WB US-95 TO NORTHWEST BLVD

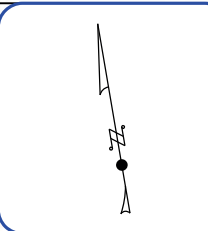
4 LANES I-90 EB NORTHWEST BLVD TO US-95

CENTENNIAL TRAIL REALIGNED

SPUI INTERCHANGE

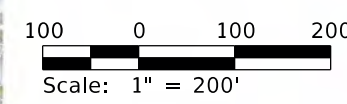
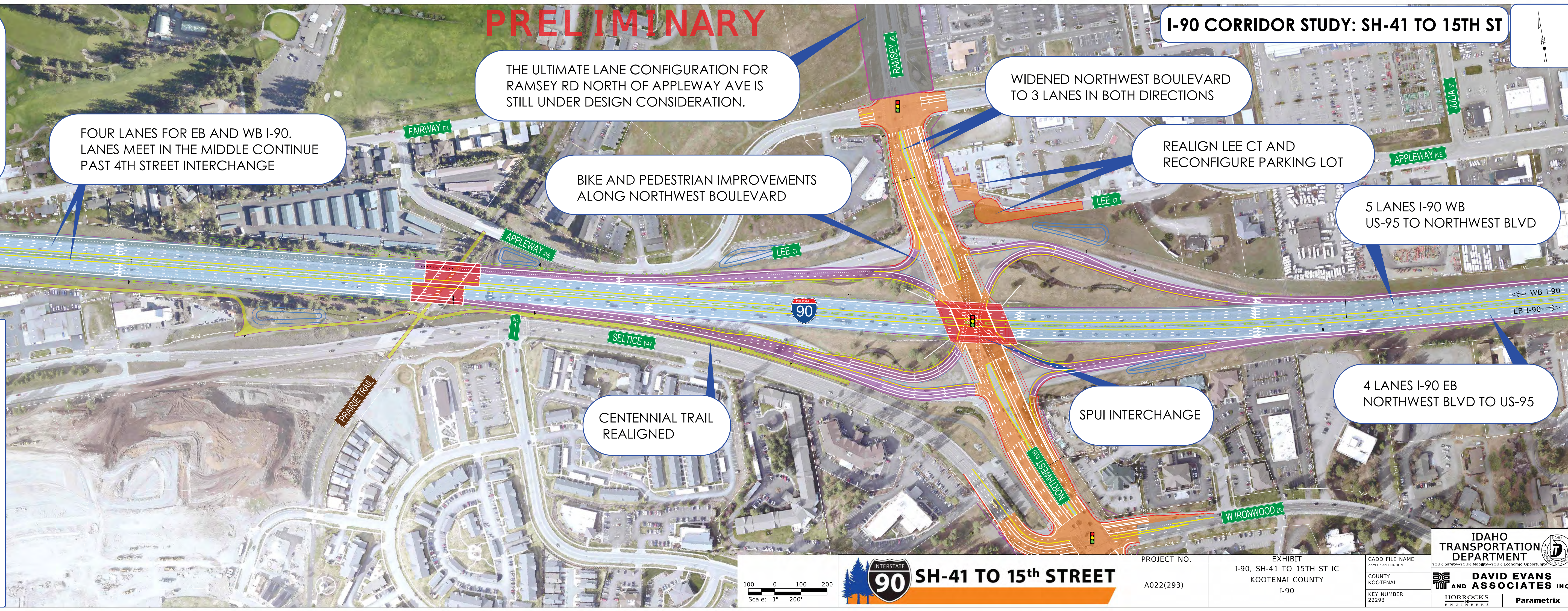
PRELIMINARY

I-90 CORRIDOR STUDY: SH-41 TO 15TH ST



LEGEND

- PROPOSED INTERSTATE I-90 EXPANSION CONSTRUCTION
- COLLECTOR DISTRIBUTOR ROAD
- INTERCHANGE RAMP
- CROSSROAD
- NEW STRUCTURE
- PAVED TRAIL CONSTRUCTED WITH THE PROJECT
- RETAINING WALL
- GUARDRAIL
- CONCRETE BARRIER
- SIDEWALK
- PROPOSED RIGHT-OF-WAY ACQUISITION (SUBJECT TO CHANGE AS DESIGN PROGRESSES)
TEMPORARY CONSTRUCTION EASEMENTS MAY BE NEEDED TO COMPLETE LOCAL ROAD IMPROVEMENTS AND WILL BE IDENTIFIED DURING FUNDED DESIGN PROJECTS.



INTERSTATE 90 SH-41 TO 15th STREET

PROJECT NO.	EXHIBIT	CADD FILE NAME
A022(293)	I-90, SH-41 TO 15TH ST IC KOOTENAI COUNTY I-90	22293 plan004.dwg
KEY NUMBER		COUNTY
22293		KOOTENAI

IDAHO TRANSPORTATION DEPARTMENT
YOUR Safety-YOUR Mobility-YOUR Economic Opportunity

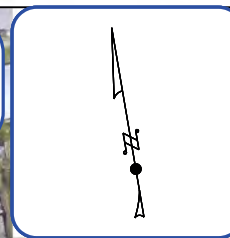
DAVID EVANS AND ASSOCIATES INC.

HORROCKS ENGINEERS **Parametrix**

PRELIMINARY

PRELIMINARY

I-90 CORRIDOR STUDY: SH-41 TO 15TH ST



SPUI INTERCHANGE

5 LANES I-90 WB
US-95 TO NORTHWEST BLVD

COLLECTOR DISTRIBUTOR ROAD SYSTEM
BETWEEN US-95 AND 4TH ST INTERCHANGE
SEPARATED BY CONCRETE BARRIER

BIKE AND PEDESTRIAN
IMPROVEMENTS ALONG 4TH ST

TO ACCESS US-95 INTERCHANGE,
VEHICLES MUST EXIT HERE FROM I-90

REPLACE 7TH STREET BRIDGE
WITH A PEDESTRIAN OVERPASS

4 LANES I-90 EB
NORTHWEST BLVD TO US-95

TO ACCESS 4TH STREET INTERCHANGE
VEHICLES MUST EXIT HERE FROM I-90

BIKE AND PEDESTRIAN
IMPROVEMENTS ALONG US-95

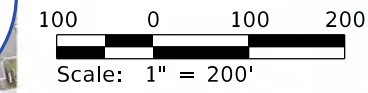
3 LANES I-90 EB AND WB
4TH ST TO 15TH ST

I-90: SH-41 TO 15TH ST GENERAL NOTES

- 1) The alignment of I-90 is still in development but will remain in existing right of way.
- 2) Temporary easements may be needed to complete local road construction and will be identified during funded design projects.

LEGEND

- PROPOSED INTERSTATE I-90 EXPANSION CONSTRUCTION
- COLLECTOR DISTRIBUTOR ROAD
- INTERCHANGE RAMP
- CROSSROAD
- NEW STRUCTURE
- PAVED TRAIL CONSTRUCTED WITH THE PROJECT
- RETAINING WALL
- GUARDRAIL
- CONCRETE BARRIER
- SIDEWALK
- PROPOSED RIGHT-OF-WAY ACQUISITION (SUBJECT TO CHANGE AS DESIGN PROGRESSES)
TEMPORARY CONSTRUCTION EASEMENTS MAY BE NEEDED TO COMPLETE LOCAL ROAD IMPROVEMENTS AND WILL BE IDENTIFIED DURING FUNDED DESIGN PROJECTS.



INTERSTATE 90 SH-41 TO 15th STREET

PROJECT NO. A022(293)	EXHIBIT I-90, SH-41 TO 15TH ST IC KOOTENAI COUNTY I-90	CADD FILE NAME 22293 plan005.dwg
		COUNTY KOOTENAI
		KEY NUMBER 22293

IDAHO TRANSPORTATION DEPARTMENT
YOUR Safety-YOUR Mobility-YOUR Economic Opportunity

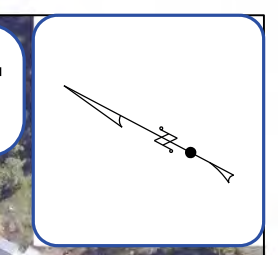
DAVID EVANS AND ASSOCIATES INC.
HORROCKS ENGINEERS Parametrix

PRELIMINARY

I-90: SH-41 TO 15TH ST GENERAL NOTES

- 1) The alignment of I-90 is still in development but will remain in existing right of way.
- 2) Temporary easements may be needed to complete local road construction and will be identified during funded design projects.

I-90 CORRIDOR STUDY: SH-41 TO 15TH ST



FUTURE POND EXPANSION SITE FOR 15TH ST DRAINAGE

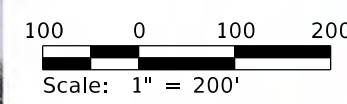
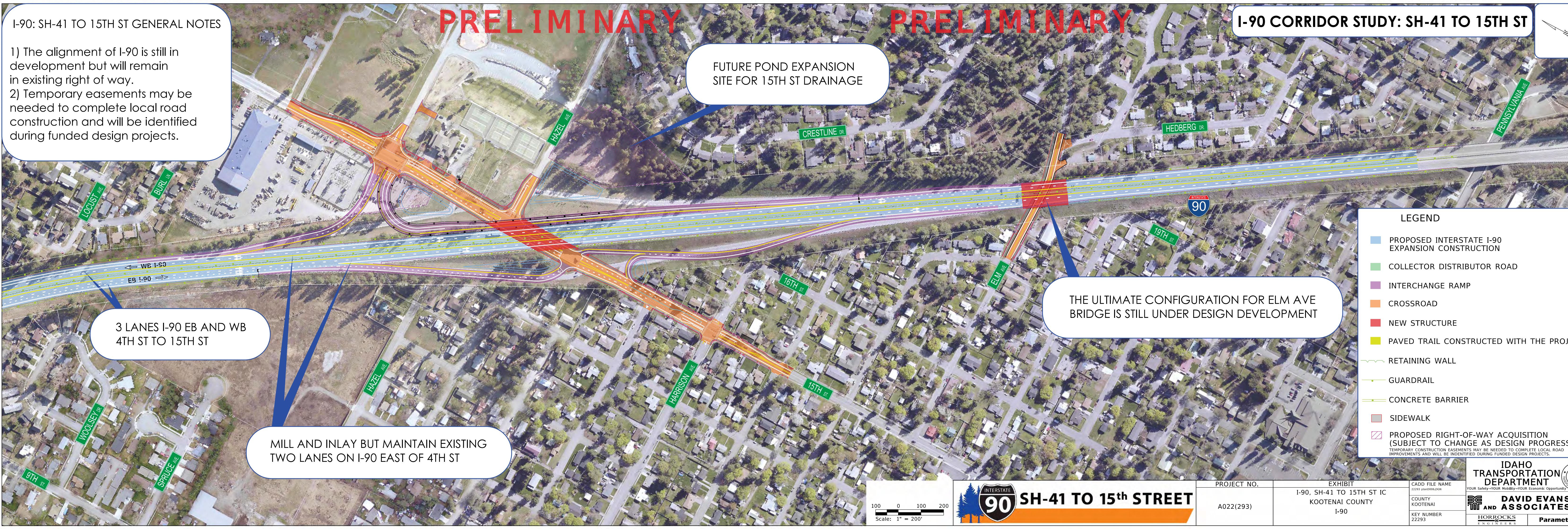
THE ULTIMATE CONFIGURATION FOR ELM AVE BRIDGE IS STILL UNDER DESIGN DEVELOPMENT

3 LANES I-90 EB AND WB
4TH ST TO 15TH ST

MILL AND INLAY BUT MAINTAIN EXISTING
TWO LANES ON I-90 EAST OF 4TH ST

LEGEND

- PROPOSED INTERSTATE I-90 EXPANSION CONSTRUCTION
- COLLECTOR DISTRIBUTOR ROAD
- INTERCHANGE RAMP
- CROSSROAD
- NEW STRUCTURE
- PAVED TRAIL CONSTRUCTED WITH THE PROJECT
- RETAINING WALL
- GUARDRAIL
- CONCRETE BARRIER
- SIDEWALK
- PROPOSED RIGHT-OF-WAY ACQUISITION (SUBJECT TO CHANGE AS DESIGN PROGRESSES)
TEMPORARY CONSTRUCTION EASEMENTS MAY BE NEEDED TO COMPLETE LOCAL ROAD IMPROVEMENTS AND WILL BE IDENTIFIED DURING FUNDED DESIGN PROJECTS.



SH-41 TO 15th STREET

PROJECT NO. A022(293)	EXHIBIT I-90, SH-41 TO 15TH ST IC KOOTENAI COUNTY I-90	CADD FILE NAME 22293 plan0004.dwg	 YOUR Safety-YOUR Mobility-YOUR Economic Opportunity HORROCKS ENGINEERS Parametrix
--------------------------	---	--------------------------------------	---