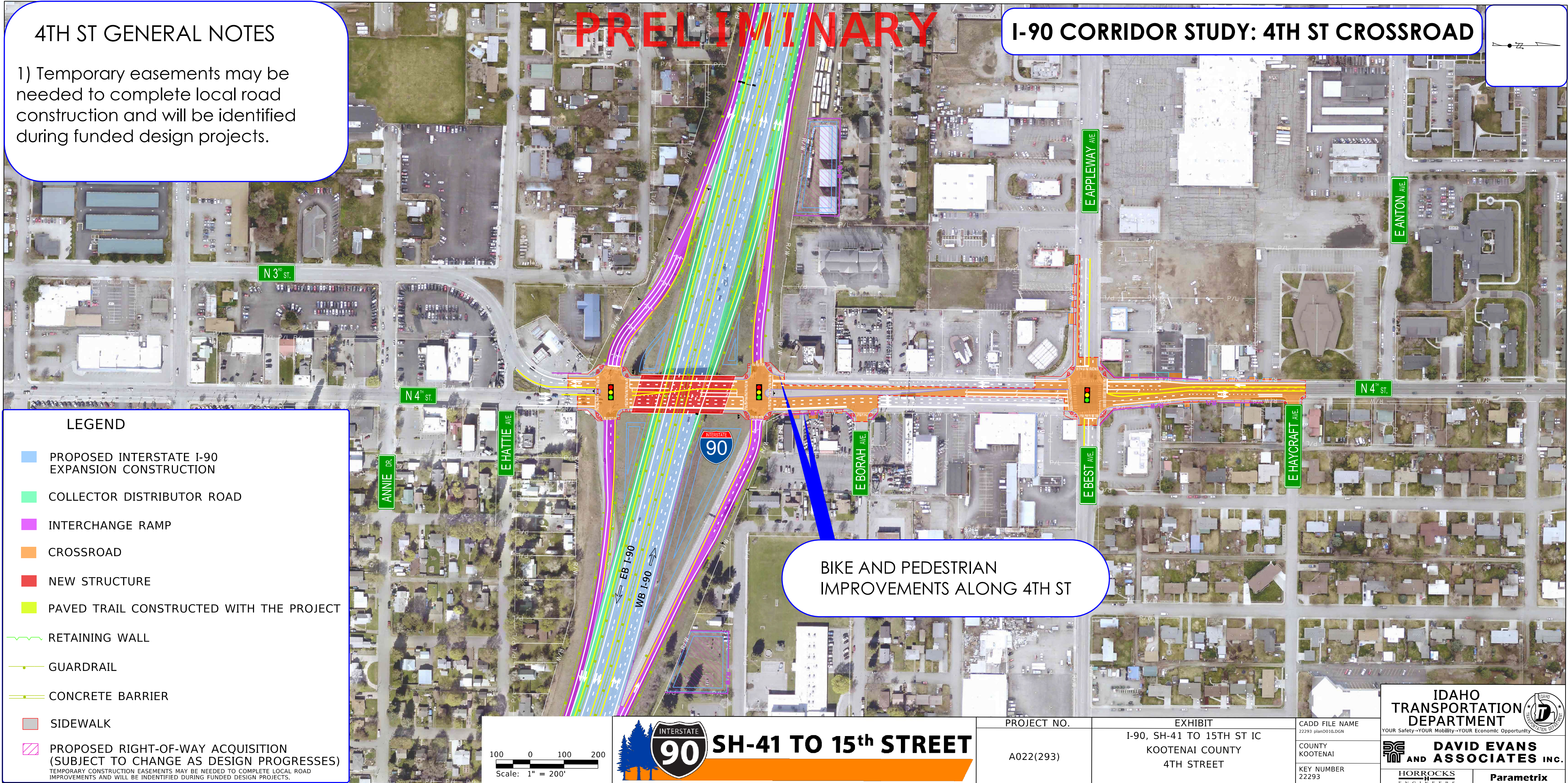
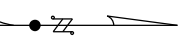


4TH ST GENERAL NOTES

1) Temporary easements may be needed to complete local road construction and will be identified during funded design projects.

PRELIMINARY

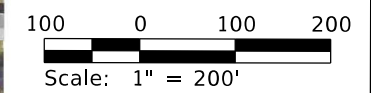
I-90 CORRIDOR STUDY: 4TH ST CROSSROAD



LEGEND

- PROPOSED INTERSTATE I-90 EXPANSION CONSTRUCTION
- COLLECTOR DISTRIBUTOR ROAD
- INTERCHANGE RAMP
- CROSSROAD
- NEW STRUCTURE
- PAVED TRAIL CONSTRUCTED WITH THE PROJECT
- ~ RETAINING WALL
- - - GUARDRAIL
- CONCRETE BARRIER
- SIDEWALK
- ▨ PROPOSED RIGHT-OF-WAY ACQUISITION (SUBJECT TO CHANGE AS DESIGN PROGRESSES)
TEMPORARY CONSTRUCTION EASEMENTS MAY BE NEEDED TO COMPLETE LOCAL ROAD IMPROVEMENTS AND WILL BE IDENTIFIED DURING FUNDED DESIGN PROJECTS.

BIKE AND PEDESTRIAN IMPROVEMENTS ALONG 4TH ST



SH-41 TO 15th STREET

PROJECT NO.	EXHIBIT	CADD FILE NAME
A022(293)	I-90, SH-41 TO 15TH ST IC KOOTENAI COUNTY 4TH STREET	22293 plan0010.DGN
		COUNTY KOOTENAI
		KEY NUMBER 22293

IDAHO TRANSPORTATION DEPARTMENT
 YOUR Safety-YOUR Mobility-YOUR Economic Opportunity

DAVID EVANS AND ASSOCIATES INC.
 HORROCKS ENGINEERS | Parametrix