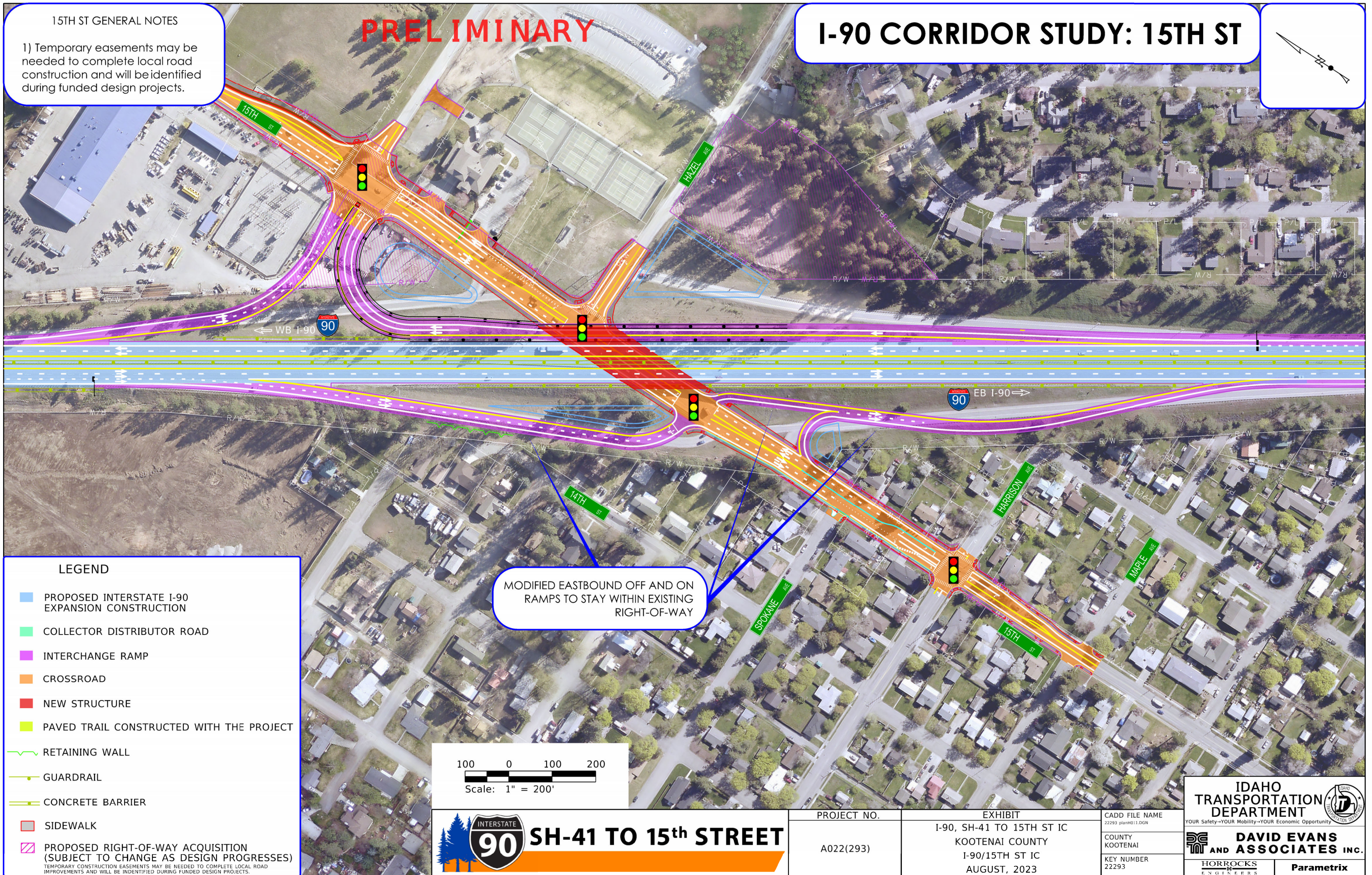
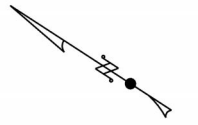


15TH ST GENERAL NOTES

1) Temporary easements may be needed to complete local road construction and will be identified during funded design projects.

PRELIMINARY

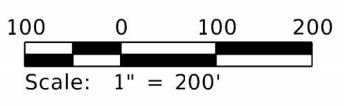
I-90 CORRIDOR STUDY: 15TH ST



MODIFIED EASTBOUND OFF AND ON RAMP TO STAY WITHIN EXISTING RIGHT-OF-WAY

LEGEND

- ▬ PROPOSED INTERSTATE I-90 EXPANSION CONSTRUCTION
- ▬ COLLECTOR DISTRIBUTOR ROAD
- ▬ INTERCHANGE RAMP
- ▬ CROSSROAD
- ▬ NEW STRUCTURE
- ▬ PAVED TRAIL CONSTRUCTED WITH THE PROJECT
- ▬ RETAINING WALL
- ▬ GUARDRAIL
- ▬ CONCRETE BARRIER
- ▬ SIDEWALK
- ▬ PROPOSED RIGHT-OF-WAY ACQUISITION (SUBJECT TO CHANGE AS DESIGN PROGRESSES)
TEMPORARY CONSTRUCTION EASEMENTS MAY BE NEEDED TO COMPLETE LOCAL ROAD IMPROVEMENTS AND WILL BE IDENTIFIED DURING FUNDED DESIGN PROJECTS.



INTERSTATE 90 SH-41 TO 15th STREET

PROJECT NO. A022(293)	EXHIBIT I-90, SH-41 TO 15TH ST IC KOOTENAI COUNTY I-90/15TH ST IC AUGUST, 2023	CADD FILE NAME 22293 planH011.DGN	IDAHO TRANSPORTATION DEPARTMENT <small>YOUR Safety—YOUR Mobility—YOUR Economic Opportunity</small> DAVID EVANS AND ASSOCIATES INC. <small>HORROCKS ENGINEERS Parametrix</small>
		COUNTY KOOTENAI KEY NUMBER 22293	